

Span of Control & Levels of Operations

EMAC: The Cornerstone of Mutual Aid



Objectives

- Become familiar with the Disaster Operations Components that conduct and coordinate EMAC response when the system is activated.
- Understand the functions of the EMAC Disaster Operations Components.
- Understand EMAC Levels of Operations.
- Understand the Span of Control for EMAC operations.



Disaster Operation Components

National Coordination Group (NCG)

State staff of current EMAC ETF Chair

EMAC A-Team

Co-located with State/Federal Personnel
In the Requesting State EOC

National Coordinating Team (NCT)

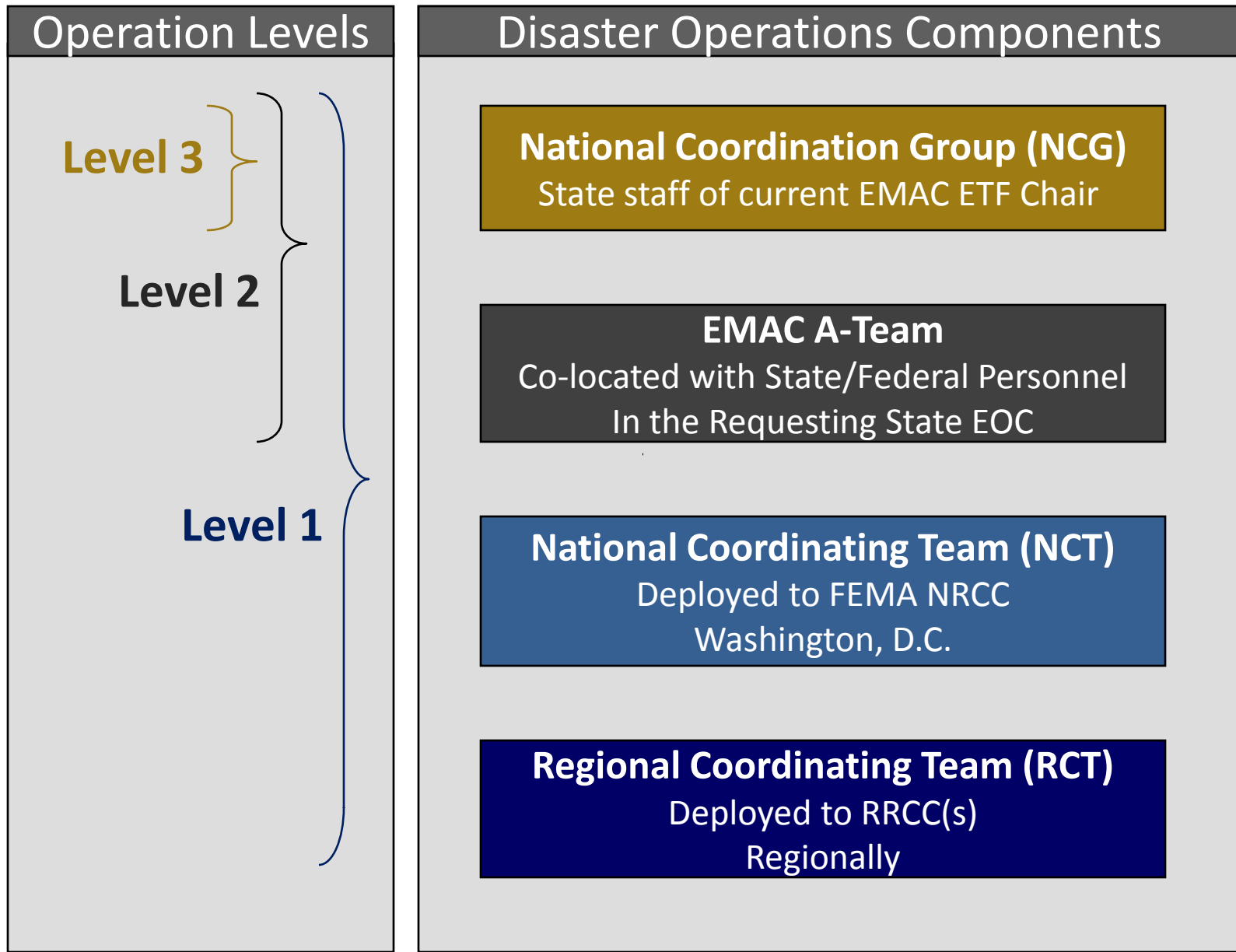
Deployed to FEMA NRCC
Washington, D.C.

Regional Coordinating Team (RCT)

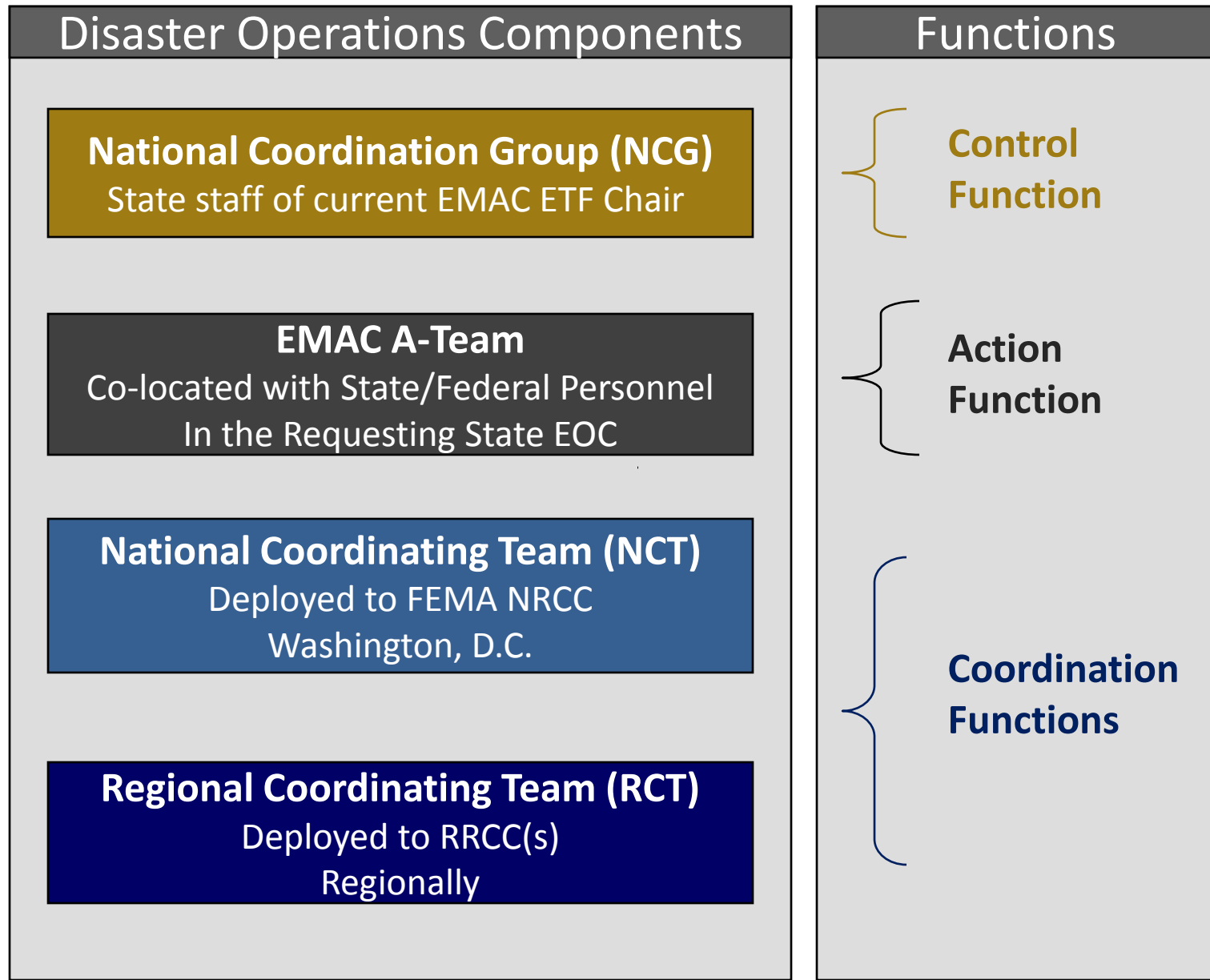
Deployed to RRCC(s)
Regionally



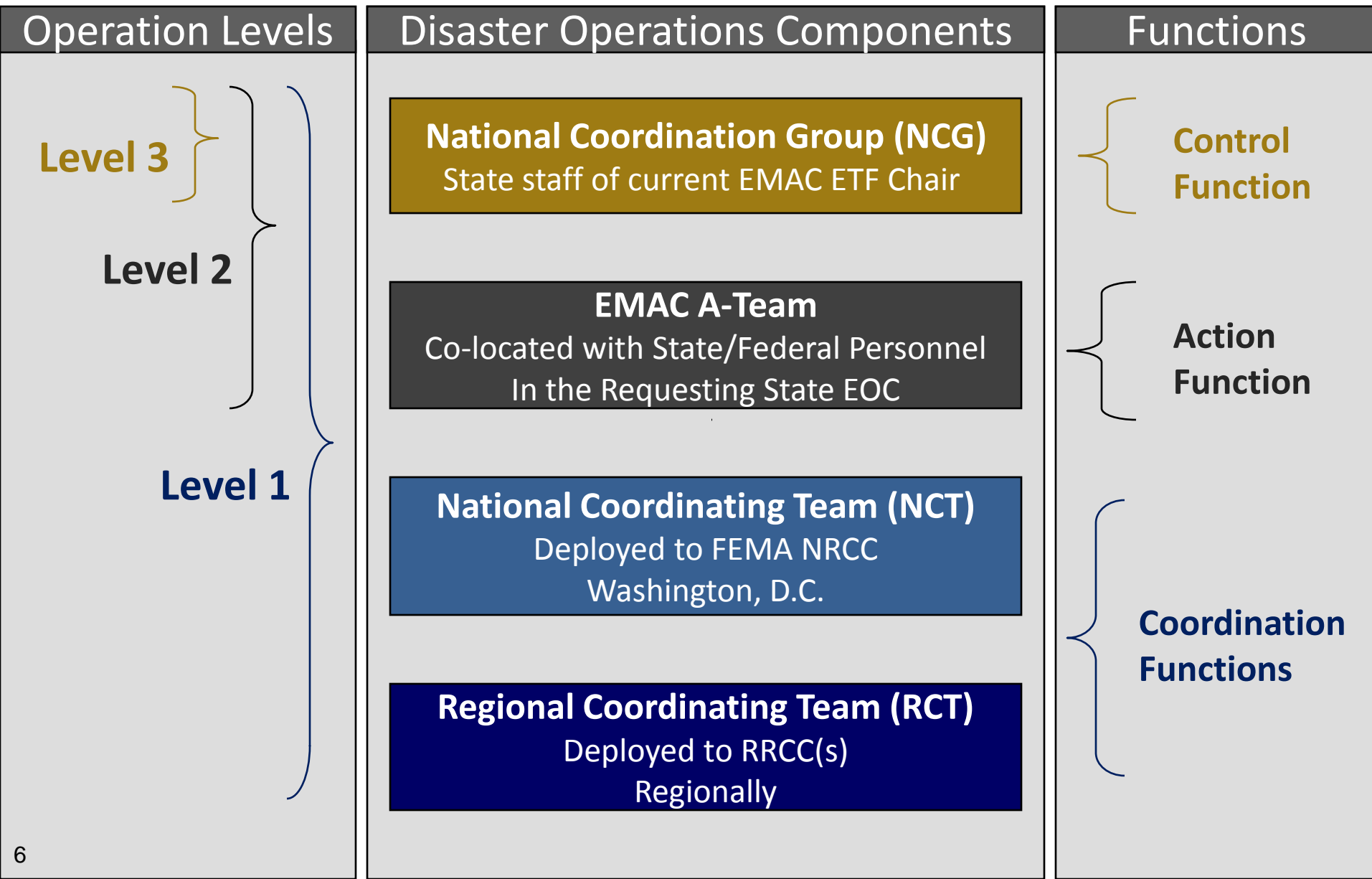
EMAC Levels of Operations



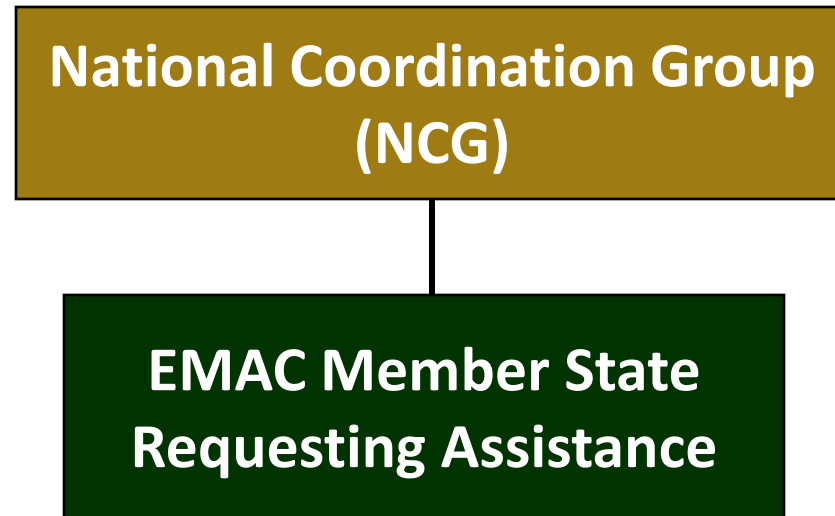
Disaster Component Functions



Effective Span of Control



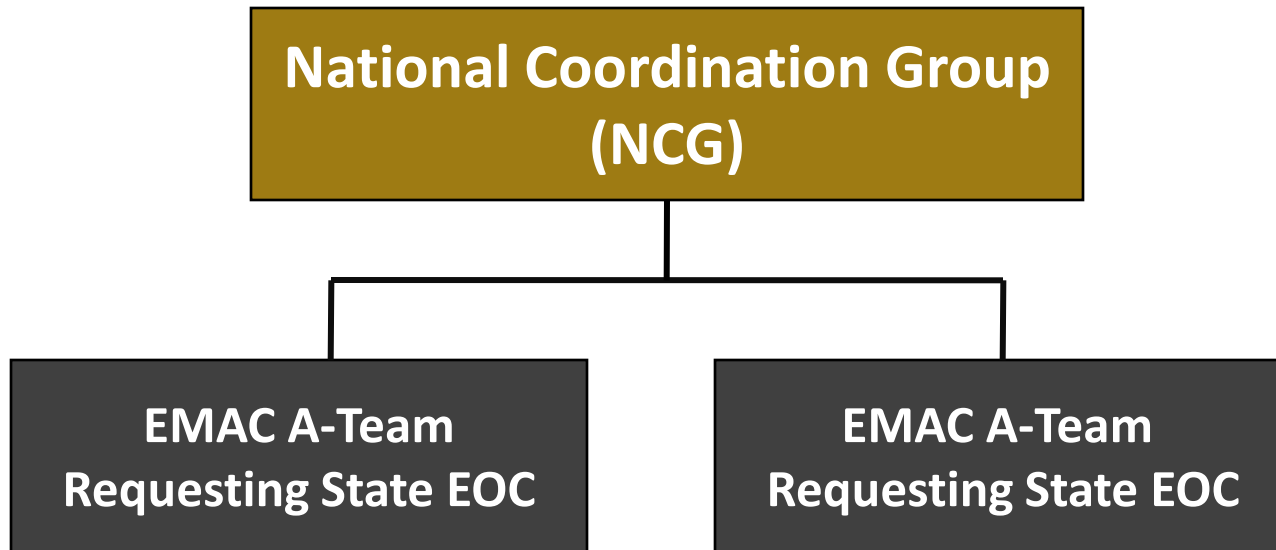
EMAC Level 3 Operation



Example: Single State / Single Region Event



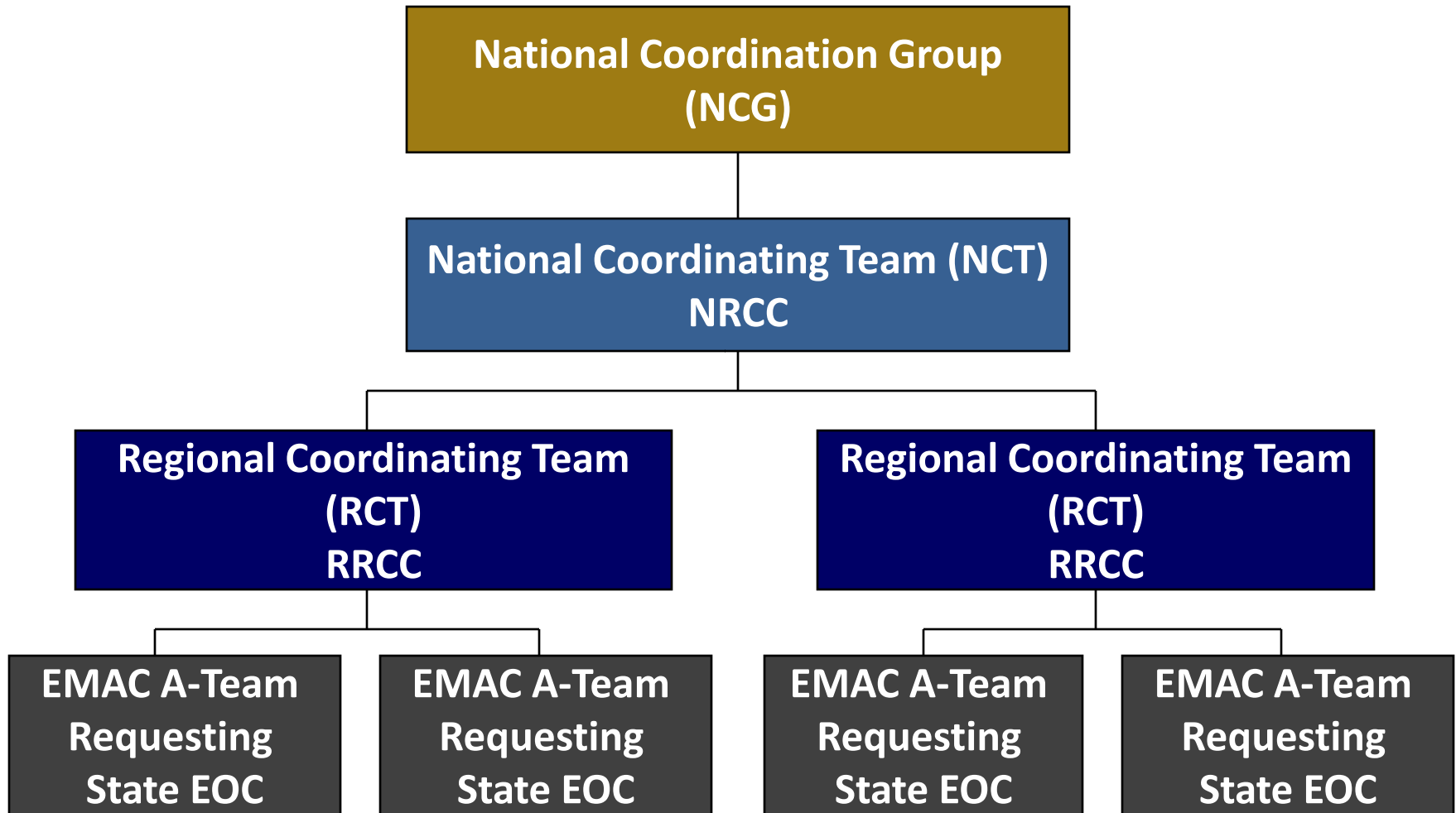
EMAC Level 2 Operation



Example: Single State or Multi-State



EMAC Level 1 Operation



Example: Multi-State / Multi-Region Event



Summary

- The coordination and control components for the EMAC process are the NCG, NCT, RCT and A-Team.
- EMAC levels of operations are adjusted in a modular fashion as the need for assistance escalates or de-escalates.
- Component functions include operational control , action (brokering resources) and coordinating and sharing information with federal partners.
- Effective span of control is key to the EMAC process.



QUESTIONS?



Think About It

What are some things a Member State can do prior to an event to prepare individuals to deploy as a member of an EMAC operations component or coordination team.

